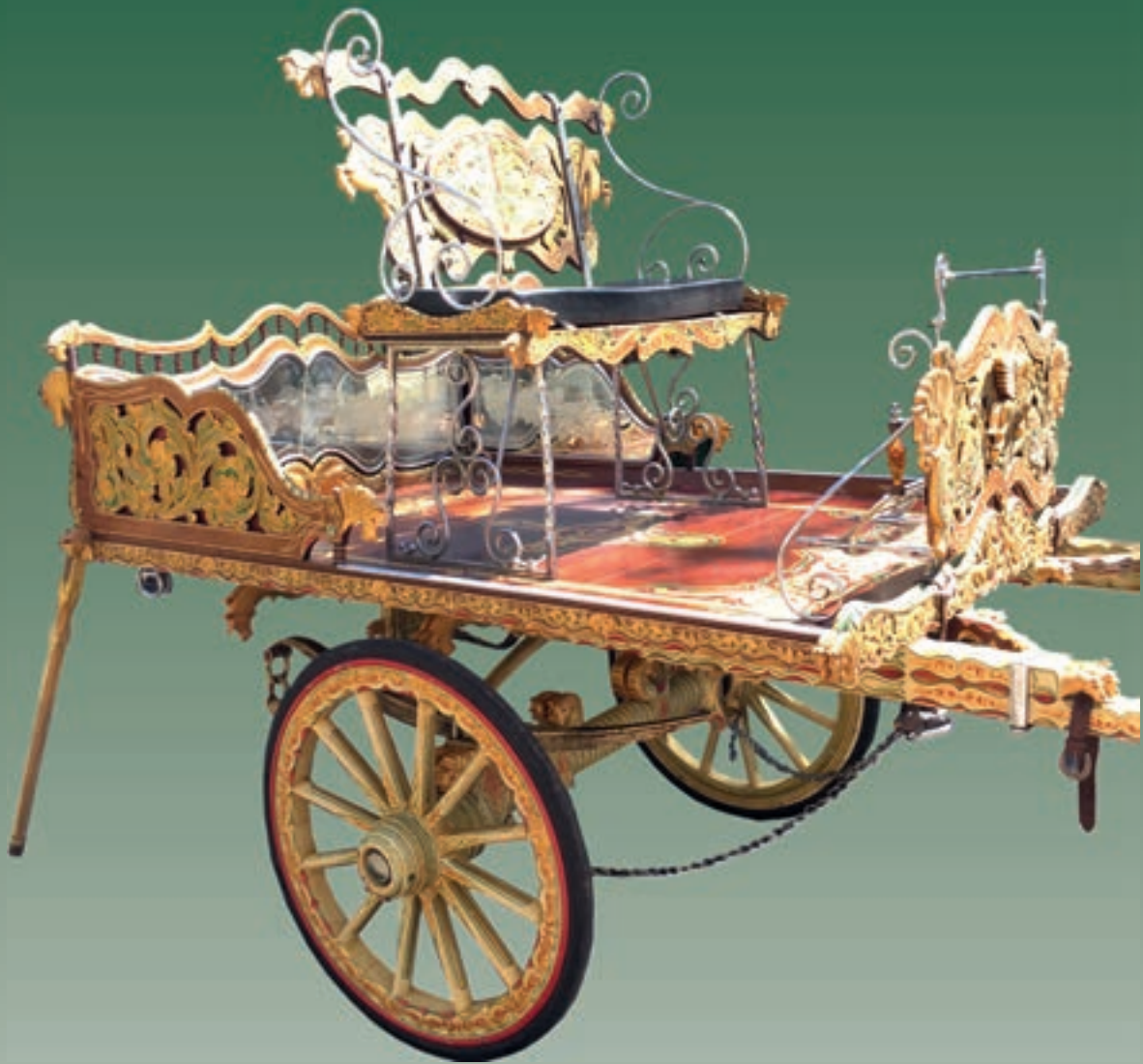


Thimbleby & Shorland



The Reading Carriage & Heavy Horse Sale

Wednesday 6TH November 2019

Commencing at 9.30 am

Reading Auction Centre

Great Knollys Street, Reading, Berkshire RG1 7HE

SALE NOTES

THE SALE WILL BE HELD under the usual Conditions of Sale, which are to be found at the end of this catalogue. In particular, descriptions made verbally or in this catalogue are not guaranteed, including sizes of harness and vehicles.

VIEWING ARRANGEMENTS Lots will be on view from 8.00am on the day of the sale. The majority of horse-drawn vehicles should be in the market prior to sale day, but most vendors bring smaller items early on the morning of the auction. Tuesday is not officially a viewing day but prospective purchasers are welcome to inspect vehicles, although we cannot guarantee the time of their arrival.

WITHDRAWN OR NOT FORWARD LOTS Despite our best endeavours to ensure that all lots catalogued come forward for sale we are at the mercy of individual vendors some of whom regrettably do not always send the lots entered. This inevitably causes frustration and annoyance to prospective customers who may have travelled long distances for a particular lot. ***To avoid such disappointment we recommend that you make a phone call to check the availability for any particular "one off" lot before setting out.***

BUYERS' NUMBERS All prospective purchasers are requested to register with the Auctioneers prior to the sale when they will be given a **Buyer's Number** to enable bidding and assist the cashiering arrangements. The Auctioneers reserve the right to request a deposit of £500 from customers not known to them upon registration.

MONEY LAUNDERING In order to comply with money laundering regulations we will not accept payments in cash exceeding £9,000. Cash payments of over £4,000 must be accompanied by valid proof of identity ie passport/driving licence supported by 2 utility bills, bank statement or equivalent.

PAYMENT for all lots **must be made on the day of sale** and methods of payment are (1) CASH (see above) and (2) DIRECT DEBIT CARDS such as Switch, Delta or Connect with PIN number. **CREDIT CARDS ARE NOT ACCEPTED.** Payments can also be made by BACS/CHAPS – bank details as follows: NATIONAL WESTMINSTER BANK PLC., 13 Market Place, Reading RG1 2EP; Clients' Auction Account number 95544070 and sort code: 60:17:21. (IBAN NO GB66 NWBK 601721 95 5440 70, BIC Code No. NWBK GB 2L). Tel: 0845 6013399. No clearance of purchases will be allowed until satisfactory payment has been received.

A BUYERS' PREMIUM of 9% (incl. VAT) will be added to the purchase price of all lots at this sale.

VALUE ADDED TAX All items consigned by VAT registered vendors are indicated by a 'V' before the lot numbers, and VAT at the standard rate will be added to purchasers' accounts in respect of these lots. No VAT will be payable upon items consigned by unregistered vendors. Any known variation in the VAT status of vendors will be announced by the Auctioneers when selling.

CLEARANCE All lots should be cleared on the day of sale, unless alternative arrangements are made, and are at the risk of the purchaser from the fall of the hammer.

INSTRUCTIONS TO BID will be executed with care and judgment by the Auctioneers. Clients who are interested in lots which are due to be offered in more than one section of the sale at the same time are reminded of this free service.

PRIVATE SALES All lots are accepted on the understanding that they **must not** be sold prior to being auctioned, and any private transactions resulting from the exposure for sale of any items must be conducted through the Auctioneers.

INSURANCE Carriage House Insurance Services and the National Farmers Union can effect transit and longer term insurances, which have been devised for carriage owners and drivers.

EXPORT PURCHASERS should ensure in advance that the country of destination has no import restrictions on the goods they wish to purchase, as our normal terms of business apply and payment in full is due on the day of sale. VAT will be charged in the normal way and refunded on proof of exportation. In addition, it is the responsibility of the Buyer to comply with export regulations and to obtain any relevant export licence, which is issued by the Arts Council England. Without prejudice and purely as a guide, it appears that for horse-drawn vehicles over 50 years old the value limit for export within the EU is £65,000 and outside the EU for vehicles over 75 years it is £39,219. Vehicles with values in excess of these limits may require an export licence.

THE CONSUMER PROTECTION FROM UNFAIR TRADING REGULATIONS 2008: All goods at this auction are second hand unless otherwise stated.

HOTELS Reading's hotels are often fully booked so it's recommended that you make arrangements well in advance of arriving at the sale. A list of hotels can be found at the back of the Catalogue.

REFRESHMENTS are available from the Market Café and onsite.

CAR PARKING There is limited space for car parking within the Market. There is a Pay & Display car park behind the Market which is operated by NCP. Please arrive in good time, particularly with lorries and trailers, to secure a place. Alternatively, there are a number of other Pay & Display car parks located around Reading town centre. Park & Ride off M4, junctions 10 & 11 to station. Please see www.reading-travelinfo.co.uk for fares and times.

THE READING CARRIAGE & HEAVY HORSE SALE

AT

**READING AUCTION CENTRE,
GREAT KNOLLYS STREET, READING RG1 7HE**

ON

WEDNESDAY 6TH NOVEMBER 2019

Commencing at 9.30 am

Catalogue £8.00



Thimbleby & Shorland
Market House
31 Great Knollys Street
READING RG1 7HU

Telephone: +44 (0) 118 950 8611
Fax: +44 (0) 118 950 5896
Web site: www.tsauction.co.uk
Email: info@tsauction.co.uk

Front cover – Lot 25

Back cover – Lots 33, 1092 and 1588

HORSE-DRAWN CARRIAGES

Commencing at 11.00 am

Please note that carriages are often attributed to builders on the evidence of their hub caps and such information cannot be relied upon in some cases



1
HORSE-DRAWN CULTIVATOR



2
HORSE-DRAWN POTATO RIDGER



3
PANELLED COUNTRY CART approx. 100 years old. In an unrestored condition but still showing some black and red paintwork, with cream lines. On 14-spoke English pattern wheels with metal treads, Dennett springs on blocks and brass hub caps. Fitted with a rear drop-down tail board, an adjustable seat, metal steps and lamp brackets.



4
CONTINENTAL PHAETON, a vehicle with some fine and interesting details, such as the folding back seat. Comes with a pole and shafts, requires some renovation but still basically a sound vehicle.



5
BENNINGTON EXERCISE CART to suit 12.2hh, with adjustable shafts, parabolic springs and a small wicker basket.



6
EXERCISE CART built by Ken Jackson to suit 10.2 to 12hh single or tandem. A smart, metal-framed vehicle painted black with adjustable axle for balance. Fitted with a rear back step and comes with interchangeable single and double driver's seat. In good condition.



7
FOUR-WHEEL CARRIAGE for a single horse, possibly of Dutch origin, finished in natural varnished wood with removable canvas hood.



8
TWO-WHEEL GAME/POULTRY CART possibly Edwardian. On 14-spoke rubber-shod wheels with semi-elliptic springs and hub caps; no maker's name. The high sides have metal railed hinged tops, with rails above. The interior has provision for hanging both large and small game with storage for hares, rabbits, etc, and the exterior is fitted with double hanging rails and a hinged door above with game counter. Fitted with wrought iron steps, lamp brackets, and footrest with lift-up cover. Measures 12ft long x 8ft high.



9
RALLI CAR built by Cullinane & Son of Skibbereen, Cork, circa 1915 to suit 15 to 16hh. Painted maroon with gold lining and black leather upholstery to back to back seating. On 14-spoke wheels with Dennett springs with engraved maker's hub caps. The rear facing seat is accessed via a drop-down panel with storage beneath. Fitted with curved mud guards and dashboard, grab handles, lamp brackets, brass whip holder and fittings. Has been shown in current condition.



10
PLEASURE CART to suit 12 to 16hh horse, single or pair. Painted navy with red lines, fitted with delayed lock with foot brake to front and rear brakes, and winding handbrake. The upholstery and cart are in great condition and very comfortable to drive.



11

FARM CART to suit 15.2 to 16.2hh, with a panelled body painted brown with cream lining. On 14-spoke English pattern wheels with iron treads, Dennett springs and brass hub caps. Fitted with double steps, a rear drop-down tail board supported on chains, lamp brackets and mud guards. In need of some restoration.



12

PRESENTATION PHAETON built by Bennington Carriages to suit 15.2 to 17hh pair. An elegant-looking vehicle with a metal-framed cut under body and painted navy blue with red lines. On 12-spoke wheels with elliptic springs and all-round disc brakes. Fitted with a handbrake, foot pedals and lamp brackets, with leatherette upholstery to the driver's and groom's seat, and the same covering to the mud guards and dashboard. Comes with a pole.



13

BUTCHER'S CART to suit 14.2 to 15.2hh. Finished in navy blue and maroon with cream lines, and black upholstered seating. On 16-spoke red Warner wheels with cranked axle and Dennett springs. Constructed with a curved roof, wooden ribs and edged with a metal rail, the meat was stored beneath and accessed by a rear drop-down door with a louvered panel. The sides of the body are sign written 'Country Butchers; Suppliers of Quality Meats, Wholesales & Retail Local Delivery' and 'Poultry and Game' and painted with a bull's head. A show condition vehicle with success at County level, it provides a well-balanced and comfortable ride. Fitted with shafts, lamp brackets, metal steps and a shaped rein rail.



14

DOG CART to suit 12.2 to 13.2hh for single or tandem ponies. Painted black and maroon with gold lining, louvered side panels and a drop-down tail board which functions as a foot board. Back to back seating is upholstered in beige cloth. On 16-spoke Warner wheels with semi-elliptic springs and brass hub caps. Fitted with a brass reins rail, lamp brackets, metal steps and mud guards. A smart vehicle, it would benefit from a repainting.

15 & 16

NO LOTS



17

BUCKET SEAT GIG by Brewster & Co., Broom St, NY circa 1914 to suit 14.2 to 15.2hh. Painted navy and yellow with black lining. The driver's and passenger's seats are separate and covered in black leather with storage below and flanked by leather-covered mudguards and a covered dash. On Denmet springs with 49ins 16-spoke Warner wheels, metal steps and fixed shafts. Fitted with whip holder, lamp brackets and a pair of black/brass carriage lamps with horseshoe fronts. A very unusual Gig reputed to have been made for Bertram Mills.



18

AMERICAN SIDE-BAR BUGGY built by Brewster & Co., Broome St, NY, USA circa 1900 to suit 14 to 15hh Hackneys; a delicate and lightweight vehicle finished in natural varnished wood with a single seat in its original blue buttoned upholstery, and covered dash. On perch undercarriage with 14-spoke English pattern Hickory wheels measuring 45ins/48ins. There is a small brass plate fixed to the rear seat engraved with the maker's name, a number under the seat and fixings to secure a hood (not available) and a pair of shafts. In a sound, unrestored condition.



19

RALLI CAR built by Thorne of Norwich, circa 1900's to suit 14.3 to 15hh. Painted black with primrose yellow undercarriage lined in black. The driver's wedge seat and passenger seating are upholstered in blue Melton buttoned cloth, with a rear drop-down panel to access the rear seat. On 'C' springs with 16-spoke Warner wheels measuring 53ins, and high curved mudguards. Fitted with an adjustable footrest, curved dash, metal steps, lamp brackets with a pair of black/brass carriage lamps with horseshoe fronts, and pair of shafts. The lamps shown in the photo are not included.



20

DEALER'S CART built by C. S. Windover, Bond Street, London, No. 15675, circa 1910, to suit 15hh. In natural wood with red and black lines. An adjustable seat with black leatherette cushion and back rest, footboard with brass rein rail, black metal ironwork and steps, and lamp brackets. On 16-spoke 55ins Warner wheels with rubber tyres and leaf springs.



21

SLEIGH/SLED to suit a horse or pony. A long slender construction of wood with metal runners front and back. In need of renovation.



23

RALLI CART built by McNaught of Worcester to suit 14.2 to 15hh. Painted black with red lines, louvered-effect panels, and undercarriage. On 14-spoke English pattern wheels with brass hub caps, cranked axle and semi-elliptic and transverse springs. Complete with a rear drop-down tailboard, adjustable seating in brown leather upholstery, a footrest, mud guards, brass rein rail, whip holder, and fixed swan neck shafts.



22

DUKE OF YORK PANEL GIG built by Lawton of London & Liverpool circa 1890 to suit 14.2 to 15.2hh. Restored in 2019 and painted red with cream lining and upholstered in beige cloth. In show condition, it has been shown successfully this year, winning and qualifying for the BDS National Championships.



24

SHELBOURNE LANDAU built by W. Harrison, Anlaby Road, Hull circa 1906 to suit 15 to 16hh. Painted royal blue with gold lining, and a gold coloured fleur de lys on the doors. On 37/44ins Warner wheels with brass hub caps and elliptic springs. Designed to carry four vis-à-vis passengers, the interior is covered in matching blue buttoned upholstery decorated with tassels and braiding, all protected by a pair of folding leatherette hoods. The driver's and groom's seat are covered in a hammer cloth to match the interior. Fitted with a handbrake, leather covered mud guards, folding steps and lamp brackets. A pair of black/whitemetal lamps with round fronts and pie crust tops will be sold with the vehicle.



25

SPINNER CART built and painted by John Pickett circa 1980's. Elaborately decorated and gilded to a very high standard with 70 carved horses' heads, leaves and scrolls. The flat bed is finished in natural varnished wood with matching decoration, etched glazing to the rear tailboard and sides, and a bench seat sign written 'General Dealer, Sean Martin', and 'SM' with whitemetal arm rests and stand.



26

KNIFE GRINDER, a two-wheel hand cart with treadle-operated grinding stones, on iron shod wheels, with a painted frame painted brown with decorations in red, yellow and blue.



27

TRAINING/EXERCISE CARRIAGE of Continental build to fit full size horses single or pair; painted black with gold lining. With rear face to face seating, and front driver's and groom's seats all covered in black faux leather, with space beneath for spares, etc. Fitted with a screw brake, whip holder and foot brake. The undercarriage is painted red with elliptic springs and all-round disc brakes. Comes with shafts and a pole.



28

TRADE DELIVERY/PROMOTION VAN to suit a full-size pair. A modern built vehicle with a dark red body lined in white, two small louvered panels, and a curved cream roof edged with a metal rail. On a red undercarriage with white lines and 12/14-spoke wheels with elliptic springs. There are whitemetal lamp brackets and rein rail. Comes with lamps and a pole. A smart vehicle in show condition.



29

CAB FRONTED DELIVERY VAN circa 1930's to suit 14.2 to 15.2hh; single or pair. Painted red and yellow. The body is sign written 'The Victoria Food Co. Purveyors of Fine Foods, Tel Chipping Sodbury 618618'. On three-stud pneumatic wheels and tyres with foot brake, lamp brackets and whitmetal foot plates. Comes with shafts and pole. Has been shown successfully with a pair of Friesians.



30

HOVIS DELIVERY BIKE painted black with a wicker bread basket



31

PRESENTATION VEHICLE built by Rivington, Co. Durham to suit 14.2hh plus. Painted navy blue with red lines and varnished wooden panels. On 14-spoke wheels, elliptic springs and fitted with rear disc brakes. Black leatherette upholstery to the driver's and groom's seat, and fitted with a screw brake, lamp brackets, a whip holder, and shafts. In excellent condition.



32

BOW TOP WAGON built in the style of Bill Wright circa 2005 to suit 14 to 16hh; the body has a base colour of green with multi-coloured decorations, and a green canvas roof with chimney. On iron shod wheels with semi-elliptic springs, a screw brake and steps. The front door is half glazed with lamp brackets either side, and spindled cages. The interior is finished in natural varnished wood and decorated with the same colours as the exterior. It is fitted out with cupboards, seating and a bed with cupboards underneath. Comes with steps and a pair of shafts. Owned by the late John Finney.

33

LEDGE WAGON built in the style of Bill Wright circa 1930's to suit 14 to 16hh; painted in a base colour of red and green it is decorated with multi-coloured carved ribs, grape vines and fruits. The corners of the roof have gargoyles with waterspouts to channel the rainwater. The front door is half glazed with an image of a rearing horse, and whitmetal mounts of cherubs either side. There are cream-painted shutters to the side and rear windows, spindled cages and a pan box. The undercarriage is painted yellow with similar colours to the body, iron wheels with leaf springs, a screw brake and steps. The interior is finished to a high standard of carved varnished wood with red and blue scrolls and lines. Fitted out with various storage cupboards, a bed with a brightly painted panel and extra storage below, plus a Queenie stove under a mantelpiece with an etched mirror. Fitted with lamp brackets and comes with a pair of steps. Owned by the late John Finney.



34

LADDER FRONT LONDON TROLLEY built by John Baker to suit 14 to 15 hh; painted maroon and cream with decorations in gold leaf, blue and red. On pneumatic tyres, folding driver's seat and a drop-down tailboard supported on whitmetal chains. It has been refurbished in the last 10 years. A pair of lamps are included with the vehicle.



35

BELLCROWN EXERCISE VEHICLE painted black to suit a miniature Shetland or Donkey.



36

DEALER'S DRAY built 1950's/60's and painted cream and brown with green lining. On pneumatic tyres with 3-stud wheels, sign written on the tailboard with a pan box beneath. Completely renovated and in good order.

CARRIAGE TRAILERS & HORSE BOXES



91

HEAVY DUTY BOX TRAILER with twin axles, refurbished approx. 4 years ago with new door closers and interior lighting. Comes with a 5-ton electric winch, set of ramps, spare wheel and tyre. Measures 16ft x 8ft.



92

SINCLAIR HORSE TRAILER with twin axles and configured to take 2 horses/ponies and a 2/4-wheeled vehicle with access via side and rear ramps. Recently fitted with a new floor. Measures - outside 5.60m long x 2.20m wide x 2.70m high, and inside 4.25m long x 1.68m wide x 2.08m high.

93

IFOR WILLIAMS FLAT BED TRAILER measuring 14ft long x 7ft high x 6ft wide.



Registered Charity Number: 1162356
Patron: HRH Prince Michael of Kent

Forthcoming Events

March 21st 2020 - Study Day at Beamish
April 19th -25th 2020 - Study Tour to Sweden
October 23rd -26th 2020 - Study Tour to Co Durham
April 25th-May 1st 2021 - Study Tour to France
October 22nd-24th 2021 - Study Tour to Scotland

For further information on any of these events please contact:
Amy Bracey
info@thecarriagefoundation.co.uk

TRANSPORTATION SERVICES

FAST 1ONE LLP

Collection and delivery of goods from one-off small items, classic cars to horse-drawn carriages

Fully insured, UK and Europe covered, van and trailers available

References available upon request

So take a load off your mind and
contact us for a quote

Contact Office: 01235 850276 (Suzanne)
Mobile: 07721 091113 (Horace)
Email: suzsymons@aol.com

The 1st Reading Carriage & Heavy Horse Sale

will be held Wednesday 4th March 2020

Entries required by 31st January 2020

Entry forms can be found on our website: www.tsauktion.co.uk

PURCHASERS ARE REMINDED OF THE 9% BUYER'S PREMIUM WHICH IS ADDED TO ALL LOTS IN THIS SALE

SETS OF HARNESS

Commencing at 9.30 am

Please note that all sets are sold 'as seen' and are NOT guaranteed complete

101

Set of brown Moroccan harness

102

Set of black Moroccan harness

103

Set of harness for a miniature Shetland

104

Set of black leather driving harness with a collar by *McRostie of Glasgow* to fit 13 to 13.2hh

105

Set of black leather driving harness with a 19ins collar

106

Set of black leather presentation PAIR harness with brass fittings, breastcollar but no traces to fit a 15.2 to 16.2hh; approx. 15 years old and in good condition

107

Set of black/whitemetal synthetic TANDEM harness to suit 10.2 to 12hh, plus a spare set of reins, traces, metal spoons, and two webbing headcollars with lead ropes

V108

An excellent set of TANDEM harness by *Ideal* to fit large cobs; no wheeler reins

109

A set of black private driving harness with brass buckles to fit 14hh to 15.2hh in very good condition in lovely supple leather, also comes with spare collar and hames by *Geoff Dean of Newmarket*

110

Part set of English harness

111

A fine set of black patent/yellow breastcollar trade harness to fit a Shetland or Section A pony, with yellow plaited reins and brass fittings

112

Set of black/chrome harness with horseshoe buckles, a 23ins tan lined collar, pad and bridle; hardly used but reins are missing

113

Set of black patent pony harness

V114

Set of harness

V115

Set of Shetland harness

V116

Set of pony harness

V117

Set of brown/brass harness

V118

Set of harness

V119

Set of brown/brass cob harness

120

Set of black/yellow trade harness to fit 14.2hh to full size; never been used or tried on

121

Set of wipe-clean pony PAIR harness; never used

122

Complete set of cob size *Zilco* harness in excellent condition

V123

Set of working harness to fit a cob

V124

Set of full size harness

V125

Set of black harness to fit a cob

V126

Set of Vanner harness

V127

Set of collar harness

V128

Set of English working harness

129

Set of pony harness by *Ideal* with stainless steel fittings; new

130

Two sets of black horse-size harness by *Huskisson of Walsall*, with additional items to make a tandem set, such as one pair of tandem leader traces, two pairs of single traces, one pair of single reins, one pair of tandem leader reins, trace carriers and breeching straps to convert to a pair harness

131

Set of harness (3 lots, 131-133)

134

Set of black/brass heavy horse harness with pad, breeching, traces, collar, hames, bridle and bit



VEHICLE PARTS

Commencing at 9.30 am

181
Carriage axle

182
Carriage spring



183
Adjustable antique carriage spanner (2 lots, 183-184)

185
Set of swan neck shafts, an axle and steps

186
Pair of four-wheeler laminated shafts

187
Pair of brass shaft ends

188
Cast iron corner manger stamped *Musgrave of Belfast*

189
Brass whip holder

190
An assortment of carriage parts

191
Pair of shafts for a four-wheel carriage

192
Brake for a Drag

193
Pair of steps for a trade vehicle (2 lots, 193-194)

195
Pair of lamp brackets

196
Brass rein rail

197
Adjustable wheel spanner, No.5

198
Agricultural seed fiddle spreader by Aero

199
Large metal wheel for an agricultural implement

200
Small box containing shaft fittings

201
Small box containing harness furniture

202
Three whip holders

203
Five amber door knobs and one other

204
Pair of good quality amber door knobs

205
Brake wheel off a Gypsy Wagon or Trolley

V206
Brass foot bell

V207
Rein rail

V208
Whip holder

V209
Brass shaft fittings

V210
Pair of brass lamp brackets

V211
Pair of whitemetal lamp brackets

V212
Set of whitemetal shaft fittings

V213
Pair of stainless-steel quick release snaps (2 lots, v213-v214)

V215
Adjustable footrest

V216
Pair of brass tug stops

V217
Pair of shaft points

V218
Sundry parts

V219
Pole head

V220
Whip holder

V221
Rein rail

V222
Set of shaft fittings brass

V223
Set of whitemetal shaft fittings

V224
Brass rein rail

V225
Pair of shaft tugs

V226
Pair of trace hooks

V227
Breeching 'D's

V228
Whip holder

V229
Rein rail

V230
Pair of brass lamp brackets

V231
Pair of whitemetal lamp brackets

V232
Pair of stainless-steel quick release snaps (2 lots, v232-v233)

V234
Assorted carriage parts

V235
Set of brass shaft fittings

236
A front boot from a Travelling Chariot

237

Wooden carved carriage headboard

238

Kühnle marathon competition carriage seat; unused

239

Pair of adjustable metal shafts

240

Square of rubber matting for a trailer

241

Pair of iron carriage wheels

242

Pair of cast iron carriage steps

243

Wooden carriage pole (2 lots, 243-244)

245

Two wooden swathe-boards

246

A swathe-board for an International mower plus foot and hand pedals for the same

247

Heavy horse equipment

248

Complete binder triple tree

249

Three binder triple trees

250

Set of wooden double trees

251

Various swingle trees

252

Carriage pole (3 lots, 252-255)

256

Pair of large black *Hartland* shafts, 38ins wide x 7ft long; would fit 16.3hh plus Shire

257

Pair of old wooden red shafts, 64ins long x 29ins wide with metal fixings

258

Pair of old wooden black shafts, 7ft long x 30ins wide with metal fixings

259

Red pole for a 4-wheel carriage, trolley shaft iron and a set of metal whippetrees

263

Horse-drawn hay sweep components comprising: 6 off 3m sweep tines with metal tips, 2 off single shafts, 2 offside arms and 1 off headstock



264

Set of four 12-spoke red carriage wheels



Flodden Edge Farm



Riding & Driving Centre

FLODDEN EDGE FARM

(Riding & Driving Centre)

Professional carriage driving instruction for all levels:
absolute beginners or advanced training



- All driving tuition is one to one • Well schooled driving horses
 - Horse Driving Trials Specialist (singles/pairs)
- Carriages custom built, harness & driving equipment for sale
 - Horse drawn carriages for weddings and special occasions
 - Or bring your own turnout
- Delightful s/c cottage (sleeps 4/6) or ensuite farmhouse B & B
- Beautiful country at historic Flodden Battlefield (Scottish Borders)

FLODDEN EDGE FARM RIDING & DRIVING CENTRE

Mindrum, Northumberland, TD12 4QG

01668 216287, phone/fax 216324 or email carriage@freeuk.com

Web site: www.floddenedgefarmequestriancentre.com

SADDLERY & TACK

To follow the Vehicle Parts at approximately 11.00 am

301 Jockey helmet by <i>Champion Advantage</i> , size 7½ to 7¼ with green silk	331 Two riding whips, a child's body protector and a riding crash hat	354 Saddle pad, a pony headcollar and a grazing mask
302 Quantity of old horse rugs	332 Shetland pony saddle with girth and stirrups	355 15½ins black leather pony saddle
303 Quantity of riding saddles	333 Two bridles, a fly hood and muzzle	356 17ins brown leather pony saddle by <i>Ideal</i>
304 Pair of black leather riding boots with wooden trees	334 Two full size rugs	357 17ins black saddle by <i>Antill</i>
305 Pair of lady's black leather riding boots with original wooden trees	335 Yard coat, size xl (2 lots, 335-336)	358 18ins black saddle by <i>Kes</i> ; new
306 Box of various tack room items	337 Gent's hacking jacket, size xl	359 17½ins brown leather saddle by <i>Hartshorne</i>
307 Box of various saddlery items	338 Large quantity of cotton polo shirts, size xl	360 17ins black leather saddle by <i>Athene</i> (2 lots, 360-361)
308 Side saddle stirrup and a safety stirrup leather by <i>Westons Patent</i>	339 Fly rug and a fleece rug, 6ft 9ins by <i>Amigo</i>	362 18ins brown leather saddle
309 Pair of long black chaps	340 Pair of leather dressage boots, size 7 (41), size x-wide	363 16½ins black leather pony saddle
310 Three folding saddle racks; new	341 Lady's driving jacket, size 20-22	364 Heavyweight neck cover by <i>Mark Todd</i> , medium
311 Four hook-over feed bins; new	342 Lady's driving jacket, size 20-24	365 Black English leather hunting breastplate, to fit a cob
312 Pony saddle	343 Body protect size xl, and a helmet	366 Brown running martingale to fit a pony
313 Three saddle racks; new	344 A pair of <i>Totector</i> ankle boots, size 41	367 English leather saddle
314 Assortment of tack (6 lots, 314-319)	345 Western saddle bought in Canada, x-full size	368 English leather endurance saddle
320 English saddle	346 A pair of <i>Totector</i> ankle boots, size 41	369 Saddle
321 Assortment of tack (6 lots, 321-326)	347 Two jute rugs, 6ft 9ins	370 Lead ropes
327 Set of travelling boots and a rug, both full size	348 Quantity of jodhpurs, size 34ins-36ins (3 lots, 348-350)	371 Quantity of bits
328 Two sheep skin numnahs	351 Box of grooming brushes	372 Saddle
329 Two full size rugs	352 Two waterproof jackets by <i>Cotton Traders</i>	373 Bridle and reins
330 Two saddle pads	353 Pair of long leather riding boots, size 7 (41), x-wide calf	374 Quantity of bits

375 Quantity of mixed leatherwork	402 Four feed bin holders	423 Side reins and lunge line
376 Set of coloured lead ropes	403 Four white saddle cloths; cleaned	424 Riding crop and a set of overreach boots
377 Quantity of stirrups	404 Five mixed saddle cloths; cleaned	425 Leather lead rein
378 17½ins GP saddle by <i>Heritage</i>	405 Seven saddle gel pads of assorted shapes and sizes	V426 NZ rug, 6ft 3ins
379 16ins pony saddle by <i>Fieldhouse</i>	406 Fifteen sets of boots - brushing, tendon and knee	V427 Ten lead ropes
380 Six various leather saddles (2 lots, 380-381)	407 Nine sets of leg bandages in various colours	V428 Bridle
382 Box of assorted straps including two nose bands, brow band, cheek pieces, etc.	408 16ins brown saddle by <i>ME Howitt</i> , D-D 7ins	V429 NZ rug, 6ft 6ins
383 Quantity of horse rugs (3 lots, 383-385)	409 17½ins brown saddle by <i>E. Jeffries</i> , D-D 7½ins	V430 Saddle
386 Quantity of bridles and reins	410 17½ins black saddle by <i>Penwood</i> , D-D 8ins	V431 Five haynets
387 Quantity of travel boots	411 17½ins GP saddle with nubuck seat by <i>Wintec</i> , D-D 8ins	V432 Bridle
388 Bridle, headcollar, etc	412 Four various bits	V433 Pair of flexi irons
389 18ins brown leather saddle, D-D 7½ins	413 Three black saddle racks	V434 Jacket
390 Four martingales - two running/two standing	414 Saddle rack with bridle racks	V435 Saddle
391 Four nosebands - three grackle/one flash	415 Four girths of varying lengths and types	V436 Numnah
392 Two bridles; no bits or reins	416 Corner feed bin	V437 NZ rug, 6ft
393 Three various headpieces	417 Leather jumping saddle made in Switzerland	V438 NZ rug, 5ft 9ins
394 Four girths (2 lots, 394-395)	418 17ins black synthetic <i>Wintec Pro Dressage Cair</i> saddle; little used and in excellent condition	V439 Girths
396 Three body protectors of various sizes - two x <i>Euro</i> /one x <i>Beta</i>	419 17½ins good quality black GP saddle by <i>Calcutt & Sons of Hampshire</i>	V440 Sundry tack
397 Four various black reins	420 Neoprene girth cover	V441 Saddle (3 lots, v441-v443)
398 Two sets of donut side reins	421 Pony lunging roller and lunge line	V444 Stable rug
399 Two sets of reins	422 Pony lunge cavesson	V445 Bridle
400 Various leather pieces		V446 Five haylage nets
401 Four assorted nose bands		V447 Ten lead ropes
		V448 Five lead ropes

V449 Saddle	V477 Pair of boots	512 Two pairs of riding reins and a riding breastplate
V450 English saddle (3 lots, v450-v452)	V478 Saddle	513 Cob size double bridle, complete (2 lots, 513-514)
V453 Pair of boots	V479 Five lead ropes	515 Full size double bridle, complete
V454 Sundry tack	V480 Rug (4 lots, v480-v483)	516 Full size riding bridle with eggbutt snaffle
V455 Bridle (2 lots, v455-v456)	V484 Pair of boots	517 Cob size riding bridle with half-moon Pelham
V457 Saddle	V485 Ten lead ropes	518 Two Chifney bits, a grackle noseband and a bridle, incomplete
V458 NZ rug	V486 Bridle	519 Market Harborough reins, etc.
V459 Sundry tack	V487 Numnah	520 Two leather pony size rollers
V460 Saddle	V488 Five haynets	521 Leather pony size breaking roller
V461 Horse measuring stick	V489 Breastplate	522 Set of <i>Wolseley Swift</i> clippers with four pairs of blades; reconditioned, gwo
V462 Jacket	V490 Sundry tack	523 Set of <i>Wolseley</i> clippers plus a shearing head with five pairs of blades; reconditioned, gwo
V463 Bridle	V491 Saddle	524 17½ins English leather saddle made by <i>Fieldhouse, Walsall</i> with a spring tree, block flaps, padded inserts, and cut back head, plus Shire safety irons and leathers
V464 Numnah	V492 Western saddle	525 Cob size in-hand bridle with a lead reins
V465 Saddle	V493 Horse rug (10 lots, v493-v502)	526 Pair of black top boots size 9 with trees, plus a pair of black half chaps
V466 Ten lead ropes	503 Shetland bridle and a grazing muzzle	527 Cob size English leather <i>Grandstand</i> noseband
V467 Fleece rug (2 lots, v467-v468)	504 Tom Thumb riding snaffle, 4ins	528 Pair of safety irons with leathers, new
V469 Saddle	505 Wicker harness basket measuring 18ins high x 26ins wide x 19ins deep	529 Cob size in-hand bridle with eggbutt snaffle
V470 Breastplate	506 Two sets of <i>Stubbs</i> harness racks comprising of a saddle/pad rack, collar rack, a bridle rack and a rein rack (3 lots, 506-508)	530 Cob size in-hand bridle
V471 Five haylage nets	509 17.5 ins brown leather saddle, wide fitting	531 Set of English show pony reins
V472 Numnah	510 16ins brown leather pony saddle, narrow/medium fitting	532 Full size <i>Dually</i> headcollar
V473 Bridle	511 17ins synthetic saddle by <i>Griffin Thorowgood</i> , wide fitting	
V474 NZ rug		
V475 Stable rug		
V476 Bridle		

533
Four pairs of full size leather stirrup leathers

534
A pair of full size leather side reins

535
Box of miscellaneous items

536
Two mouth grids and two running martingales

537
Two body rollers, an anti-cast roller and three surcingles

538
Two pairs of *Woof* tendon boots and one other pair

539
Two pairs of knee boots and a full size hood

540
Cob size blue/red sweat rug

541
Black lunge line, plus draw reins

542
Night rug, 5ft 6ins

543
Night rug, 5ft 9ins by *Horse World*

544
Cob-size night rug

545
Quantity of triple link curb chains

546
Selection of shoeing tools - three rasps, one hammer, one clencher, two pair pincers and a paring knife

547
Four pairs of pliers

548
Three pairs of antique spurs

549
Three breaking bits with players

550
Three bits - one Fulmer and two vulcanite Pelhams

551
Six eggbutt snaffle bits

552
Six assorted riding bits

553
Six x 20ltr stable buckets with hanging brackets

554
18ins English leather saddle, med (2 lots, 554-555)

556
17ins leather GP/jumping saddle by *Kent*, medium

557
17ins saddle by *GFS*, wide

558
Quantity of leg boots, overreach and bandages

559
Assortment of numnahs for GP/dressage; new

560
Quantity of assorted bits

561
Quantity of bridle parts and a large tub of saddle soap

562
Two pairs of stainless steels stirrups

563
Heavy duty galvanised corner hay rack (3 lots, 563-565)

566
Two *Loden* galvanised corner mangers; used

567
Two galvanised door grills

568
Anti-weave grill

569
Two saddle racks

570
Assortment of *Cottage Craft* leather show balding girths

571
Full size outdoor neck cover, a pony head and neck stable cover and a large black *Snuggly Hood* neck cover

572
Summer cotton sheet, 4ft 9ins

573
Two stable rugs, 5ft 3ins and 5ft 9ins

574
Turnout rug, 6ft by *Mark Todd*

575
Full size exercise rain sheet

576
Gent's wool riding jacket in rust/brown by *Moss Bros.*, approx. 44ins; good condition, lightly worn

577
Gent's country tweed jacket, size xxl

578
Three wax jackets - one size xl/two size xxl; in good condition, hardly worn

579
Two new body warmers - blue size xxl, green size xxxl

580
Lady's black wool jacket by *Hebden Cord*, size 12; lightly worn

581
Lady's black jacket by *Harry Hall*, size 12; slightly worn

582
Lady's beige breeches, size 28; new

583
Brown leather pony saddle with crupper and two numnahs



584
Late Victorian 20ins side saddle with stirrup and comes with a *Snuggly Hood* fleece cover; in good condition for its age

585
16ins vintage racing saddle

Anyone missing their lot/s, either bought or unsold, must speak to a member of staff on the day of the sale, prior to leaving the premises, so we can investigate the matter.

SUNDRY HARNESS & ACCOUTREMENTS

To follow Sets of Harness at approximately 10.00 am

- 701**
A pair of leather traces with French loop ends, one unused synthetic cob size driving bridle by *Rene Schoop* and a synthetic under-headcollar
- 702**
Pair of black/brass carriage lamps with oval fronts
- 703**
Wicker harness basket measures 18ins high x 26ins wide x 19ins deep
- 704**
Shire bridle
- 705**
Liverpool bit
- 706**
Two driving whips
- 707**
Collar, 21ins
- 708**
Pair of carriage lamps
- 709**
Assortment of driving tack
- 710**
Pair of brass carriage lamps with oval fronts (2 lots, 710-711)
- 712**
Victorian veterinary fleam (*view in security pen*)
- 713**
Leather sandwich case (*view in security pen*)
- 714**
Two Liverpool bits, 5ins
- 715**
A rubber Liverpool bit, 5½ins
- 716**
A van lamp
- 717**
Black silk top hat, size 6⅞
- 718**
High quality whalebone dealer's whip by *Swaine, London* (*view in security pen*)
- 719**
Dealer's whip by *Varney Pledge*
- 720**
Quantity of showing canes and swagger stick
- 721**
Lady's silver mounted park whip (*view in security pen*)
- 722**
Lady's park whip (*view in security pen*)
- 723**
Gent's heavy hunting whip with concealed blade (*view in security pen*)
- 724**
Riding whip with a concealed blade (*view in security pen*)
- 725**
Silver mounted clock for a Park Drag circa 1910, in working order. Slight crack to the glass (*view in security pen*)
- 726**
Brass name plate by *Musgrave* (*view in security pen*)
- 727**
Side saddle safety iron (*view in security pen*)
- 728**
Oak stable bucket
- 729**
Quantity of tooth rasps and a gag
- 730**
Three brass measuring jugs
- 731**
17ins brown leather collar with hames
- 732**
Leather in-hand lead rein with brass chain end
- 733**
Brown English leather driving pad
- 734**
Liverpool pony driving bit; as new
- 735**
Liverpool horse bit
- 736**
Lady's cane driving whip with lash
- 737**
Driving whip with silver hallmarked butt cap (*view in security pen*)
- 738**
Single Landau carriage lamp
- 739**
Rear carriage lamp
- 740**
Copper foot warmer in excellent condition
- 741**
Quantity of bits
- 742**
Pair of traces
- 743**
Split driving collar
- 744**
Assortment of harness
- 745**
Driving bridle
- 746**
Quantity of martingales
- 747**
Pair of plaited pair reins stamped *Robert Steinke Saddler*; as new
- 748**
Pair of carriage lamps
- 749**
Pair of black/whitemetal plaited leather driving reins
- 750**
Pair of brass carriage lamps with oval fronts
- 751**
Measuring cane
- 752**
Pair of brown/brass padded driving reins
- 753**
Cane driving whip by *Doubert*
- 754**
Patent leather show collar, 22ins

755
Gladstone bag

756
Wooden walking stick

757
Shire bridle

758
Pair of good quality brown leather traces

759
Ferruled driving whip

760
Holly driving whip (*view in security pen*)

761
Side saddle

762
Two nylon heavy horse headcollars

763
4pc set of harness racks

764
Measuring cane

765
Cane/horn riding whip

766
Pair of brass carriage lamps with horseshoe fronts

767
Driving spares kit

768
Dealer's whip by *Crawley* with brass weighted end cap

769
Pair of plaited leather driving reins

770
Cob size driving pad with back band and tugs

771
Driving apron

772
Two brass rumble bells

773
Pair of black leather traces

774
Pair of square fronted carriage lamps in show condition with screw-in stems by *Mills of Paddington* (*view in security pen*)

775
Pair of brass pony size carriage lamps with oval fronts and side fittings by *Mills of Paddington* (*view in security pen*)

776
Pair of show condition nickel carriage lamps with oval fronts (*view in security pen*)

777
Pair of brass pony size carriage lamps with oval fronts; in show condition (*view in security pen*)

778
Pair of whitemetal carriage lamps with oval fronts in show condition (*view in security pen*)

779
Large wooden harness tank

780
A rare Victorian walking/horse measuring stick inscribed *M. Long, 217 High Holborn, London*, with a stag's horn handle and brass collar. The handle detaches to reveal a pull-out, folding brass measure. In good, usable condition (*view in security pen*)

781
Original large coaching whip presented to the *Royal South Bucks Agricultural Association* by *Master Saddler, John Judd of Slough* (*view in security pen*)

782
An original brown leather gun case

783
Antique walking stick with a bronze handle in the form a hunting dog retrieving a pheasant

784
Antique hunting/coaching horn in copper and brass

785
Quantity of old riding crops

786
Antique crop with plaited stick, horn handle with silver maker's button and collar dated 1913 and stamped *Schomberg, Long Acre, London*; very good quality (*view in security pen*)

787
Antique crop with stag's horn handle and silver collar

788
A good quality hunt crop with bamboo shaft, stag's horn handle and silver collar

789
A good quality hunting crop with stag's horn handle and silver collar

790
Antique leather gun case

791
Good quality antique travelling case with green silk-effect lining, containing an assortment of compartments; in exceptional condition (*view in security pen*)

792
Cast iron 10 pint pot by *Holcroft* and an antique cast iron kettle

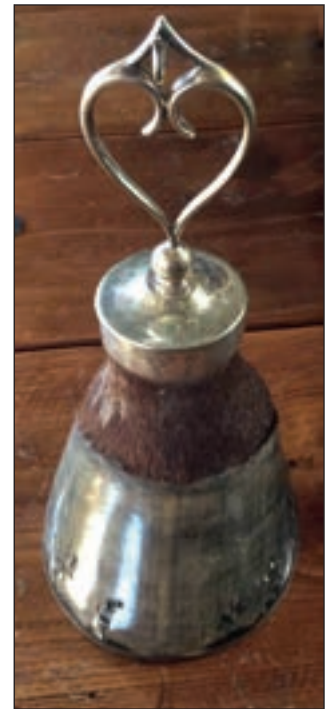
793
Antique cast iron blacksmith's vice

794
Two bags containing various harness pieces

795
Two antique coaching knives (*view in security pen*)

796
An 8-day *Smith's* fusee movement clock (*view in security pen*)

797
A French antique silver pocket watch with a decorative back on an Albert chain (*view in security pen*)



798
A silver pocket watch holder mounted on a horse's hoof (*view in security pen*)



799
A Regency rosewood tea caddy with original glass bowl, silver handle and claw feet. All original and in good condition (*view in security pen*)

800
A Regency oak travelling tea caddy with original glass ball, claw feet, lock and key (*view in security pen*)

801
Decorative antique stick/whip stand

802
Antique gun case by *Cogswell & Harrison Ltd, London, est. 1770*

803
Malacca cane with a silver collar and ivory handle

804
Victorian ebony walking stick with a carved horn handle of a horse's hoof

805
Black leather flask case by *Shires*

806
Silver topped glass hunting flask; no case (*view in security pen*)

807
Havana leather flask case by *Shires*

808
Cream servant's crop by *Swaine & Adeney* with antler handle and plaited stick

809
Black leather bridle to fit a small pony

810
Brown leather bridle to fit a small pony

811
Black leather pony bridle

812
Black leather bridle for a small pony (2 lots, 812-813)

814
Brown English leather reins

815
Six assorted leather brow bands

816
Brown anti-cast roller

817
Set of black leather traces

818
Black leather traces, 72ins by *Huskisson of Walsall*

819
Black breeching back strap by *Huskisson of Walsall* (3 lots 819-821)

822
Black driving bowler hat, 7 1/8 (58cm)

823
Black driving bowler hat, size 7.25 (59cm)

824
Grey bowler hat, size 7.5 (61cm)

825
Black driving bowler hat, size 7 1/8 (58cm)

826
Brown bowler hat, size 7.5 (61cm)

827
Black driving bowler hat, size 6.75 (55cm) (2 lots, 827-828)

829
Brown bowler hat, size 6 5/8 (54cm)

830
Grey bowler hat, size 6.75 (55cm) (2 lots, 830-831)

832
Grey bowler hat, size 7 5/8 (62cm)

833
Brown bowler hat, size 7 3/8 (60cm)

834
Grey bowler hat, size 7.5 (61cm)

835
Grey bowler hat, size 6 5/8 (54cm)

836
Brown bowler hat, size 7.5 (61cm)

837
Brown bowler hat, size 6 5/8 (54cm)

838
Grey bowler hat, size 7.5 (61cm)

839
Brown bowler hat, size 7 3/8 (60cm)

841
Pair of square patterned Gig lamps with nickel trim and good quality silver plated interior; in sound condition (*view in security pen*)

842
Pair of brass trimmed Gig lamps with oval fronts and a silver-plated interior; in sound condition (*view in security pen*)

843
Pair of square patterned Brougham lamps by *Cook & Holdaway, Longacre, London*, with integral brackets, glass a/f (*view in security pen*)

844
Pair of military saddle wallets

845
Small leather shoulder cartridge bag

846
A good quality leather and oak cartridge magazine with brass fittings (*view in security pen*)

847
A leather letter shoulder pouch with a brass plate engraved *Lord Dorchester* (*view in security pen*)

848
A lady's fur carriage muff with original box (*view in security pen*)

849
A fireman's copper and brass hand/belt lamp stamped *Merryweather, London* in excellent condition (*view in security pen*)

850
A bundle of sundry whips/crops, etc (2 lots, 850-851)

852
Dark green Melton cloth carriage rug with check lining and a nickel-plated tie ring

853
Brass 'gypsy' table lamp with a strawberry patterned cranberry glass shade (*view in security pen*)

854

A black plaited and whale bone lady's side saddle whip with ornate gilt mounts (*view in security pen*)

855

A cream plaited and whale bone lady's side saddle whip with gilt mounts (*view in security pen*)

856

A pair of nickel-plated boot pulls with rosewood handles in a black/maroon leather slip case (*view in security pen*)

857

Polished wooded spur bar complete with four pairs of nickel spurs, all by *Maxwell of London* (*view in security pen*)

858

Pair of black heavy horse rugs with yellow edging from the Wills Estate, Blagdon, Somerset, along with various photographs of Shire horses and a written account of Mr G. Edwards, Farm Manager to the Winterstoke Estate of Blagdon, circa 1900

859

Pair of black boots with tan tops and wooden trees

860

Pair of capped elbow pads, *Heath's* patent with a photocopy of the patent

861

Leather sewing palm (*view in security pen*)

862

Child's decorative American saddle

863

A small square leather hat box

864

A square canvas and leather hat box

865

A copper and nickel-silver 'folded' pocket coach horn by *Ward, Liverpool* (*view in security pen*)

866

Copper and nickel-silver coach horn (*view in security pen*)

867

Two boot jacks - one folding and the other by *Tom Hill*

868

Sundry (3 lots, 868-870)

871

Silk top hat

872

Silk top hat by *Willoughby, Paris*

873

Silk top hat by *Dunn & Co.*



874

Superb vintage suitcase with red silk interior fitted to take four top hats and another in the lid; in excellent condition. *Hats shown in the photo are not included*

875

Box of various harness items and brasses

876

Box of leather saddle holsters and cases with glass and silver flasks

877

Leather case with a sandwich box and flask

878

Three vintage water buckets

879

Brass singeing iron

880

Vintage horse measure

881

Lady's carriage foot muff

882

Lady's carriage copper hand warmer

883

Silver miniature coaching horn with hallmark; probably an apprentice's piece (*view in security pen*)

884

Clock and a barometer in the form of horseshoes (*view in security pen*)

885

Pewter flask by *Sykes* in a fitted leather case with saddle mounting (*view in security pen*)

886

A box containing boot pulls, slips, a shoe horn and button hooks, made by *Asprey's* (*view in security pen*)

887

Lady's riding crop with a plaited shaft (2 lots, 887-888)

889

Gent's riding crop with a silver collar by *Owen*

890

Dealer's whip with thong by *G. Holland of London* (*view in security pen*)

891

Brass cream churn by *Skidmore & Son*, measures 19ins and in excellent condition (*view in security pen*)

892

Gent's riding crop with thong

893

Gent's grey top hat with box, size xl

894

Five lignum vitae chocks (2 lots, 894-895)

896

Six lignum vitae chocks

897

Three gent's hunting crops - two with thongs and the other by *Swaine* with a silver collar (*view in security pen*)

898

Step ladder for a Brake or carriage

899

Four Liverpool bits with bottom bars

900

Pair of full size leather wheeler reins

901

Pair of full size leather single reins

902

Hunting flask with a leather case

903

Six webbing headcollars of varying sizes

910 A 1920's large navy blue Melton cloth carriage rug with tan checked lining	929 Advertising mirror for <i>Angus Harness Maker, Newcastle</i>	949 Collar, pad and traces with whitemetal fittings from Earl of Leicester
911 Plaited leather whip with a concealed dagger in the shaft (<i>view in security pen</i>)	930 Large ornate carriage lamp (<i>view in security pen</i>)	950 Driving pad and collar from the Earl of Leicester
912 Gent's hunt crop with silver collars	931 Single whip reel	951 Travelling halter and muzzle, etc
913 Hunting crop	932 Rear carriage lamp	952 Iberian saddle
914 Side saddle whip	933 Quantity of coach horns for repair	953 Overcheck with bit (2 lots, 953-954)
915 Crop with thong	934 Extendable harness cleaning crane	955 Two overcheck bits
916 Standing boot jack	935 A side saddle stirrup by <i>Scott's</i>	956 Driving pad for a Sleigh
917 Sandwich case for saddle mounting	936 Two Patent side saddle stirrups	957 Saddler's stitching clams
918 Lady's parasol with ivory handle (<i>view in security pen</i>)	937 Saddle airer	958 Quantity of round punches
919 Hunting horn	938 Shaped wooden saddle rack	959 Collar maker's iron
920 Top hat, size 6¾	939 Two manger logs	960 Box of saddler's sundries and tools
921 Folding horse measure by <i>Smith Worthington, New York</i>	940 Wooden saddle stand	961 Quantity of harness fittings
922 Ring for a carriage rug (<i>view in security pen</i>)	941 Double wooden saddle rack	962 Quantity of saddler's materials
923 Leather hat box	942 Nickel Beaufort coach horn by <i>Köhler</i> with monogram	963 Quantity of leather (2 lots, 963-964)
924 Pair of black leather boots with trees	943 Holly driving whip	965 Quantity of awls
925 Leather Gladstone bag	944 Jointed whip on a board (<i>view in security pen</i>)	966 Lead rein with brass decorations
926 Ribbed coach horn by <i>Army & Navy</i> (<i>view in security pen</i>)	945 Quantity of rug rings	967 Martingale with brasses
927 Pair of rare narrow fronted carriage lamps with magnified lenses to the side panes (<i>view in security pen</i>)	946 Brass door handle in the form of a bit	968 Quantity of brass heavy horse decorations
928 Pair of square fronted carriage lamps with nickel trim	947 Two liveried carriage horse rugs both with applied crown	969 Pair of matching brasses
	948 Liveried carriage apron with applied crown, and a removable hanging device	970 Two presentation brasses
		971 Antique mouthing bit

972 A martingale on leather with brasses stamped <i>RSPCA</i>	992 Lady's silk side saddle top hat by <i>Lock & Co.</i>	1013 Leather flask holster with saddle fittings
973 Military/donkey saddle	993 Three black bowler hats	1014 Pair of coursing slips
974 Pair of cage stirrups	994 Silk top hat by <i>F. W. Knowles of Chester</i> ; in good condition	1015 Pair of square fronted carriage lamps with nickel trim
975 Military swan neck spurs	995 Tall silk top hat by <i>Henry Heath</i> ; excellent vintage condition	1016 Pair of nickel trim carriage lamps
976 Large wooden South American stirrup	996 Silk top hat by <i>Geo. B. Ashford Ltd</i>	1017 Antique mouthing bit
977 Two bell pattern South American Cavalry stirrups	997 Silk top hat by <i>Cunningham & Co., Edinburgh</i>	1018 Quantity of assorted bits
978 Pair of large rowelled spurs	998 Silk top hat by <i>Scott & Co.</i>	1019 Unusual vintage bits
979 Two unusual rowelled spurs	999 Driving bits	1020 Brass ferruled whip by <i>Crawley</i>
980 South American stirrups	1000 Quantity of harness parts	1021 Holly driving whip
981 <i>Hausman</i> pattern mouth gag with a set of spare mouth plates	1001 Lead ropes	1022 Black belly band; new
982 Freestanding wooden vintage saddle horse	1002 Pair of Tilbury tugs and straps	1023 Patent collar, 21ins with brass hames
983 Double leather top hat box; for restoration	1003 Two pairs of chaps	1024 Gig collar, 22ins
984 Vintage campaign chair	1004 Quantity of sundry harness straps	1025 Brass ferruled whip by <i>Crawley</i>
985 Vintage saddler's clamp	1005 Pair of traces	1026 Pair of carriage lamps
986 Assortment of leather accessories, anti-cast roller, knee caps, etc	1006 Driving whip	1027 Coach horn with Beaufort funnel
987 Two vintage leather muzzles and a drenching bit	1007 Brass ferruled whip	1028 Coach horn by <i>Army & Navy</i>
988 Quantity of bridles and bits	1008 Driving whip with thong	1029 Collar with hame straps
989 Antique cast iron harness and saddle racks	1009 Horseshoe cheek bit	1030 Two harness pads
990 Antique metal hat box	1010 Gent's hunt crop	1031 Dealer's whip
991 Vintage grey bowler hat by <i>Scott's</i>	1011 Hunting crop	1032 Holly whip
	1012 Folding boot jack	1033 Set of traces
		1034 Lady's hunt crop

1035

Gent's hunt crop

1036

An officer's saddle

1037

Lady's hat with hat box (2 lots, 1037-1038)

1039

Waterproof driving apron (2 lots, 1039-1040)

1041

Large bowler hat (2 lots, 1041-1042)

1043

Waterproof exercise driving rug to fit a large horse

1044

Large carriage lamp

1045

Sundry (10 lots, 1045-1054)

1055

Pair of black square fronted carriage lamps with whitemetal trim and bevelled glazing; recondition

1056

A navy *Globe-Trotter* suitcase from the *Suit Case Co. Ltd* with canvas straps and nickel lock and key; in good condition

1057

Pair of very small lamp brackets and a small brass lamp spanner in the form of a feather, inscribed *White Manufacturing Co., Carriage Mountings, Bridgeport, Connecticut* (view in security pen)

1058

Pair of brass carriage lamps with oval fronts (view in security pen)

1059

Pair of carriage lamps with pagoda tops (view in security pen)

1060

Pair of round Brake lamps (view in security pen)

1061

Pair of Dog Cart lamps (view in security pen)

1062

Milk can

1062A

Copper foot warmer

V1063

Sundry (20 lots, v1063-v1082)

1083

A large canvas and wooden travelling trunk

1084

Brown leather square hat box, and a straw boater

1085

Brass coach horn with inscriptions and a copper coach horn

1086

A delicate black lace parasol with carved ebony handle (view in security pen)

1087

Four-in-hand whip

1088

Breastplate

1089

Quantity of straps

1090

Pair of black/brass pair breechings and a lightweight breastcollar with fixed traces



1092

A brown leather double hat box initialled *WK* on the lid, with red velvet interior, a brass lock and key. In excellent condition measures 15ins tall

1093

Zilco Shetland tugs

1094

Cob size breastplate by *Tedex*

1095

Cob size breeching seat by *Tedex*

1096

Tedex tugs

1097

Mullen bit, 4½ins

1098

Holly driving whip by *Swaine* circa 1910, refurbished by the late *Denis Walmsley* (view in security pen)

1099

Set of webbing pony pair reins

1100

Pair of brass hames

1101

Horse measuring stick

1102

Cob breeching seat and loin straps by *Tedex*

1103

Pony driving bridle

1104

Set of full size 'S' grip reins by *Zilco*

1105

Wilson snaffle, 4ins

1106

Mullen bit, 4½ins

1107

Wilson snaffle, 4ins



1108

Wooden training rein handler



1109

Two wooden harness horses

1110
Pair of Tilbury tugs and straps

1111
Set of lead ropes

1112
Galvanised and brass-banded water carrier engraved *W. Wright Junior, made by J. Bishop & Sons, Lowestoft*. An early can of importance to wagon collectors

1113
Set of metal blinker moulds

1114
Cast iron cooking tripod for a Gypsy Wagon, possibly made by *Coalbrookdale Works*

1115
Miniature bit (*view in security pen*)

1116
Carter's whip with 24 brass ferrules and a coin set in the butt cap (*view in the security pen*)

1117
A very fine measuring stick in good condition, silver mounted and engraved *1895 George William Vose (view in security pen)*

1118
Dealer's whip by *Crawley & Son, Peterborough (view in security pen)*

1119
Steel lined dealer's whip (*view in security pen*)

1120
Dealer's whip stamped *Swaine (view in security pen)*

1121
Dealer's whip by *J. Holland & Son* with a 1943 farthing set in the butt cap (*view in security pen*)

1122
Dealer's whip by *Lardner & Lardner (view in security pen)*

1123
Angel lamp with ruby-coloured glass oil reservoir, etched fluted shade and a glass funnel, supported on a chrome bracket and decorated with a cherub (*view in security pen*)



1124
Angel lamp with ruby-coloured glass oil reservoir, etched fluted shade and glass funnel, supported on a chrome bracket decorated with a cherub and an over-hanging smoke shade (*view in security pen*)

1125
Three-fold wood and metal coaching ladder (*view in security pen*)

1126
Seven bowler hats - two x brown, one x grey and four x black

1127
Hungarian bull whip

1128
American lasso

1129
Leather horse buffer (*view in security pen*)

1130
Pair of oil lamps from a Showman's Wagon (*view in security pen*)

1131
Bowler hat stretcher

1132
Small box of brass harness decorations

1133
Ruby glass oil reservoir off an angel lamp made by *Hinks & Son*

1134
Logging/pack horse pad

1135
Hunting crop dated 1921 by *Swaine & Adeney*

1136
Brass and wood balling gun

1137
Brass balling gun made by *Arnold & Son, Patent 699*

1138
Wooden balling gun

1139
Wood and iron balling gun

1140
Pair of folding dockers by *Arnold & Son*

1141
Pair of brass and wood docking shears

1142
Fleam and blood stick

1143
Swaine & Adeney jointed dog leg holly whip with a silver mount by *Edwin Henry Watts, 1892*

1144
Holly whip engraved *Edward Goddard Ltd, Made in England*

1145
Holly whip by *Swaine & Adeney* with silver mount dated 1885 and engraved *Alfred Gooch Charles Juthill, MRIN 1887*

1146
Mahogany top hat stretcher

1147
All-brass singeing iron

1148
Greyhound slip

1149
Pair of carriage lamps with pagoda tops by *Marston of Birmingham*

1150
Pair of large round fronted carriage lamps by *Morgan & Co. Ltd, Long Acre, London*

1151
Pair of carriage lamps with pagoda tops by *Cockshoot & Co., Manchester*

1152
Pair of whitemetal carriage lamps with shaped fronts and pie crust tops by *Marshallsea, Ilminster*

1153
Pair of whitemetal carriage lamps with square fronts by *Coachmans Carriage Co., Grand Rapids, Michigan*

1154
Leather driving pad with whitemetal fittings and crests from the Spencer family

1155
Tin top hat box with a top hat

1156
Quantity of *Musgrave*-style harness racks

1157
Pair of whitemetal horseshoe fronted carriage lamps

1158
Box of miscellaneous harness pieces including an in-hand pony bridle, etc.

1159
Four driving aprons

1160
An apprentice piece or a salesman's sample of a very fine full set of miniature hackney harness with full collar and tail stand stamped *Champion & Wilton (view in security pen)*

V1161
Dealer's whip

V1162
Pair of hoof nippers

V1163
Set of pair horse driving reins

V1164
Breastcollar

V1165
Pair of carriage lamps

V1166
Horse measuring stick

V1167
Liverpool bit with port

V1168
Pair pole straps

V1169
Driving whip

V1170
Lightweight driving whip (2 lots, v1 170-v1 171)

V1172
Breastcollar

V1173
Pair of Buxton bits

V1174
Two whip thongs

V1175
A case containing two Liverpool bits with interchangeable mouthpieces

V1176
Driving bridle

V1177
Collar

V1178
Driving pad

V1179
Three harness bells

V1180
Set of harness racks

V1181
Driving apron

V1182
Breastcollar

V1183
Pair of fleece harness pads

V1184
Pair of carriage lamps with horseshoe fronts

V1185
Whip by *Crawley of Peterborough*

V1186
Whip by *Holland of London*

V1187
Number holder

V1188
Pair of carriage lamps

V1189
Driving whip

V1190
Rear lamp

V1191
Horseshoe Wilson bit, 5½ins

V1192
Horseshoe Wilson bit, 4½ins

V1193
Pair of stainless-steel quick release snaps (2 lots, v1 193-v1 194)

V1195
Waffle harness pad

V1196
Liverpool bit

V1197
Whip

V1198
Driving collar

V1199
Driving whip

V1200
Driving pad

V1201
Horse measuring standard

V1202
Holly whip

V1203
Show rug

V1204
Driving bridle

V1205
Brass name plates (2 lots, v1205-v1206)

V1207
Military saddle

V1208
Pair of carriage lamps

1209
Stainless-steel gag snaffle, 5½ins and a pony size apple mouth bit by *Zilco*, 4½ins

1210
Driver's leather safety belt

1211
Cob size synthetic pair reins by *Zilco*

1212
Synthetic driving bridle

1213
Mullen mouth driving bit, 5ins and a Liverpool bit, 5½ins

1214
Military elbow bit, 4½ins

1215
Mullen mouth driving bit, 5½ins and a straight bar driving bit, 5ins

1216
Goat collar, 12ins

1217
English leather neck collar, 16ins

1218

English leather neck collar, 20ins

1219

A pair of small driving gloves and a pair of deerskin driving gloves, size 10

1220

Two pairs of driving gloves, size xxl

1221

Half-moon saddler's knife; new (*view in security pen*)

1222

A new strap cutter (*view in security pen*)

1223

A rare and elegant pair of early 19thC steel child's stirrups both stamped *Carter, Edinburgh*

1224

A lady's 19thC steel safety stirrup stamped *Latchford, St. Martins Lane, London*; another stamped *Scott's Patent, Size 4, 50676*; a large hand-forged iron stirrup to fit a person's plastered foot; a child's steel stirrup stamped *Champion & Wilton, Oxford St*, patent with a crown and a single stirrup in solid nickel plus another pair both stamped *Hand-Forged Steel*

1225

A pair of hand-beaten brass stirrups

1226

Beautifully stitched leather slipper stirrup, and two (not a pair) capped stirrup irons

1227

Stitched leather case with a glass flask (missing sandwich box); a leather flask case, and two leather hunting horn cases (*view in security pen*)

1228

A pair of nickel spurs with a 'spur' monogram and letter *H*; a pair of lady's/child's spurs with similar stamp; another pair stamped *Eglent*; a pair of cavalry spurs; two odd spurs both stamped *Craig* and an assortment of leather spur straps and a pair of boot hooks

1229

A wooden pine box containing an assortment of buckles some of which are antique brass, plus hooks and a bridle hook

1230

Seven fine brass harness decorations and a pair of brass terrets

1231

Two 19thC brass singeing irons - one with a tooled copper head stamped with a crown and *G. Deakin's Patent*, and the other with a turned hardwood handle

1232

Four jointed snaffles, including a snaffle stamped *Hand-Forged Champion & Wilton Steel*, and a plated twisted snaffle

1233

Vulcanite nickel snaffle with half-moon mouthpiece stamped *Soliu World*; a thick mouthed jointed snaffle and an aluminium D-ring snaffle with a (damaged) vulcanite jointed mouth

1234

A high ported snaffle plated mouth and steel rings stamped *Cuff & Son* and a nickel jointed eggbutt snaffle stamped with *PAT. No. 026291*

1235

Two unusual plated curb bits, one stamped *Hames Leicester WC**

1236

Two Weymouth curbs - one stamped *Nickel Best* and the other a pretty park curb stamped *Fulton*

1237

A beautiful 19thC park curb stamped *Bar*

1238

Pelham with curb chain and lip strap stamped *Corona Cannot Rust*; another older chain stamped and a Rugby Pelham; plating poor

1239

Pelham-type bit with twin straight bar mouth with movable lower bar and a high ported Hanoverian Pelham stamped *S. C.* with curb chain and lip strap

1240

Chrome-plated thick-mouthed bit with curb chain stamped *Capt. Whatton's Competition Bit, reg. no. 094535* and another stamped *J. Dewsbury & Son Ltd* and a monogrammed cuffed hand; the rubber has perished

1241

A rare 19thC Liverpool-style bit possibly for hearse harness and a Buxton bit

1242

Two unusual rare 19thC mouthing bits with players

1243

Eight bits - an early simple straight snaffle; a twisted snaffle; a flexi-cheek chain snaffle stamped; a jointed snaffle with cheek pieces stitched onto the rings; a pony snaffle; a jointed gag with 'Duncan' cheek; a wooden roller mouthing bit stamped *Mohawk Patent 549* and a jointed snaffle with extended steel loop and bars possibly military *1,414 L F20*

1244

Short-cheek port roller curb, along with a Segundo curb stamped *L SIML* on the port and *Sowter & Co & Haymarket* on the long curb cheeks

1245

Two Weymouth-style bits one stamped *Newton* and one *Newcastle*, and a bit with swivel cheeks with an upside down port and unusual cheek pieces

1246

A unusual flat-sided curb with a high flat port; another with roller mouth and high port attached to which is a snaffle, and a Buxton driving bit

1247

Twelve old bits, rusty but complete - a roller-mouthed Buxton; two jointed snaffles and one straight; two more snaffles, one with two mouth pieces (one fixed, the other movable) both with steel mouth shields and six curb type bits

1248

A 19thC Austro-Hungarian military curb stamped *2 7219 RFL.PECS*



1250

A traditional Icelandic nickel bit with brass decoration stamped *Made in England*

1251

An American walking horse curb; a snaffle stamped *My Horse and Made in Australia* and a high port curb bit purchased in Argentina

V1252

Driving collar

V1253

Driving whip

V1254

Set of harness racks

V1255

Pair of breastcollars

V1256

Liverpool bit, 5ins

V1257

Pair of fleece harness pads

V1258

Driving collar

V1259

Horse measuring stick

V1260

Breaking harness with brass mounts

V1261

Pair of Liverpool bits

V1262

Sundry harness

V1263

Brollar

V1264

Driving reins

V1265

Pair of traces

V1266

Pair of nickel trade lamps

V1267

Pair of carriage lamps with brass trim and oval fronts

V1268

Dealer's whip

V1269

Two whip thongs

V1270

Liverpool bit, 4½ins

V1271

Driving bridle

V1272

Driving collar

V1273

Driving whip

V1274

Rear lamp

V1275

Pair of carriage lamps with horseshoe fronts

V1276

Pair of full size *Zilco* reins

V1277

Adjustable harness cleaning hook

V1278

Collar, 22ins

V1279

Three harness bells

V1280

Pair of quick release snaps (2 lots, v1280-v1281)

V1282

Wilson bit

V1283

Liverpool bit

V1284

Pair of collar hames

V1285

Collar

V1286

Driving pad

V1287

Pair of driving reins

V1288

Driving whip

V1289

Pair of carriage lamps (2 lots, v1289-v1290)

V1291

Ten lead ropes

V1292

Set of pair horse reins

V1293

Stainless-steel back chain

V1294

Pair of cotton plough lines

V1295

Nylon Shire size headcollar (2 lots, v1295-v1296)

V1297

Cart collar

V1298

Driving whip

V1299

Pair of cotton plough lines

1300

A spares case for private driving with contents (*view in security pen*)

1301

Two pony size waterproof sheets

1302

Set of pony size *Saxon* travelling boots

1303

A child's driving apron and two adult driving aprons

1304

Cob size waterproof sheet

1305

Saddle pad, a number holder and a pair of driving cones

1306

Horse measuring stick with brass fittings and a spirit level

1307

Full size holly whip with leather hand part and silver mounts with *1880* inscription

1308 Pony size holly whip	1329 Two Canadian heavy horse collars in need of repair	1348 Single set of black reins with brass buckle, 6ft
1309 Full size holly whip with leather hand part (2 lots, 1309-1310)	1330 Two <i>Bentley</i> grooming bags	1349 Set of black/brass pair reins, 6ft
1311 Two full size working whips	1331 Box of leather gaiters	1350 Set of black/whitemetal reins, 6ft
1312 Two walking sticks - one has a silver mount and horn handle, the other is black with a silver top	1332 Large leather nose band	1351 Set of brown/brass pair reins, 6ft from splice and 7.5ft to bit
1313 Black bowler hat with a showing cane	1333 Two matching brass team pads, plus a crupper and back strap	1352 Set of brown pair reins with brass buckles, 7ft x 18ft
1314 Cob size driving reins with brass buckles	1334 Three rings	1353 Pair of 6ft traces with swingletree hooks
1315 Full size driving reins with brass buckles	1335 Two matching brass team pads, plus a crupper and back straps	1354 Pair of traces, 6ft with brass buckles (5 lots, 1354-1358)
1316 Full size driving reins with padded hand parts	1336 Three rings	1359 Plain leather collar, 22ins
1317 Set of single quick-release traces	1337 Two matching brass team pad, plus a crupper and back straps	1360 Plain leather collar, 23ins
1318 Set of quick-release pair traces	1338 Three rings	1361 Patent leather collar, 21ins
1319 Tandem rein carriers, tie downs and trace carriers	1339 Five assorted bridles	1362 Patent leather collar, 21 1/2ins
1320 Miscellaneous harness spares, etc.	1340 Breeching and pole straps	1363 Plain leather collar, 20ins
1321 Set of cob size pair traces	1341 Two pairs of breeching	1364 Pair of whitemetal hames
1322 Set of full size traces	1342 Two leather pole straps	1365 Two pairs of brass hames
1323 Pair of brass carriage lamps by <i>Alfred Hales</i> (<i>view in security pen</i>)	1343 Two non-matching traces, 6ft 5ins	1366 Pair of leather-covered hames
1324 Pair of pole chains	1344 Single reins, 8ft + 8ft (total 16ft)	1367 Tall brass oil lamp, 19ins tall (<i>view in security pen</i>)
1325 Three driving bits - two Liverpool and one Wilson snaffle	1345 Pair of single black reins with brass buckles, 8ft and 9ft	1368 Tall brass oil lamp, 20ins tall (<i>view in security pen</i>)
1326 Full size army reversible bit	1346 Set of single leather reins, 24ft with brass buckles	1369 Antique saddle/harness horse (2 lots, 1369-1370)
1327 Leather heavy horse headcollars	1347 Two sets of single reins with brass buckles, 7ft and 20ft	
1328 Pair of brass hames for a pony		

EQUESTRIAN & SPORTING PRINTS & PICTURES

Commencing at approximately 12.30 pm

- 1401**
Large gilt framed antique oil on board depicting ploughing horses, signed by M. Jeffries
- 1402**
A very large, unframed antique oil on canvas depicting wild horses
- 1403**
Unframed oil painting on canvas of a horse
- 1404**
Framed picture depicting three horses
- 1405**
Set of four framed prints depicting humorous scenes of horse dealing
- 1406**
Driving collage by Ann Graham-Johnson, ltd. ed. 10 & 11 framed
- 1407**
Framed humorous print depicting a donkey on a railway line
- 1408**
A framed display of fifty *John Player & Son* cigarette cards depicting firefighting appliances from 1721 onwards
- 1409**
Two Gypsy Wagon prints
- 1410**
Framed print of a team of Shires entitled *Horse Power*, measures 33ins x 26½ins
- 1411**
An ornate gilt framed painting of a village scene entitled *Shakespeare's England (Welford-on-Avon)* by J.L. Chapman, measures 35½ins x 21ins
- 1412**
Limited edition framed print depicting a ploughman with his horse and dog by Peter Goodhall, no.64/375, measures 27ins x 21½ins
- 1413**
Framed print entitled *The Smithy* by Stan Mitchell, measures 26ins x 20ins
- 1414**
Framed print entitled *Inside the Smithy* by Peter Goodhall, measures 26ins x 19ins
- 1415**
Framed print of a blacksmith's shop by Peter Goodhall, measures 22ins x 18ins
- 1416**
Framed print depicting three Shires feeding in the yard by Peter Goodhall, measures 23ins x 19ins
- 1417**
Limited edition print entitled *The Morning of the Show* by Phillipa Atkins, no. 22/2000, measures 22ins x 17½ins
- 1418**
Framed print entitled *Whoa! Steady!* by Wright Barker (1891-1941), measures 21ins x 17ins
- 1419**
An ornate gilt framed painting of a Shire being shod, by Alan Fairbrass, measures 20½ins x 16½ins
- 1420**
Framed photograph of a Shire mare and foal, measures 17ins x 14ins
- 1421**
Framed print of a pair of Shires ploughing by Don Vaughan, measures 15ins x 12½ins
- 1422**
A framed oval photograph of a pair of Shires outside a Whitbread pub, measures 15ins x 11½ins
- 1423**
Framed limited edition print entitled *Coming Home* by Andrea Hellyar, commissioned by *Border Fine Arts*, 700/750, measures 28½ins x 22½ins
- 1424**
Pair of coaching prints - London to Plymouth and Perth to Aberdeen by Cecil Aldin
- 1425**
A fine photograph of a manual fire engine lettered *Sherborne 1878*, with a crew of five and a pair of harnessed horses. The image measures 15ins x 12½ins and the frame is 26ins x 21½ins
- 1426**
Presentation photograph of a Sherborne Fire Engine with a crew of fifteen, inscribed on a brass plate *To 2nd Office J. N. Taylor by members of the Sherborne Fire Brigade, 23 August 1905*. Image measures 24ins x 18½ins and the frame is 33½ins x 28ins
- 1427**
Framed raised-effect picture of a coaching scene York to London
- 1428**
Large framed coaching print after Cooper Henderson
- 1429**
Large framed coaching print after Cooper Henderson
- 1430**
Limited edition framed print of Lurchers signed by Mick Cawston, 1992
- 1431**
Large framed hunting print by Cecil Aldin entitled *The Quorn*
- 1432**
Large framed picture of *Bob the Cob*
- 1433**
A framed black and white print of two carriage horses showing a single and pair harness. A page taken from a paper circa 1890's size 41cm x 36.5cm, and another black and white framed print taken from a page of *The Graphic* showing a lady hunting side saddle jumping a hedge, entitled *Going Well*, dated February 10th 1984, measures 44.5cm x 36cm
- 1434**
Framed colour print entitled *Istabraq - A True Champion* by Peter Curling, an Irish caricature artist of famous faces of sport, measures 68cm x 54cm
- 1435**
Framed print by Henry Gillard Glindoni entitled *An Anxious Moment*
- 1436**
Unframed picture of the *Household Cavalry*

MODELS

To follow Pictures



1461
Child's antique pedal horse by *Holds* and restored by *Griffin* in 1982

1462
Antique china model of a horse bust

1463
Large model of a Spelter horse, *Marie*

1464
Child's donkey cart by *Triang*

1465
Heavy antique brass model of a horse in trot

1466
Pair of decorative cast iron tethering rings in the form of a horse's head

1467
Decorative mirror for a Gypsy Wagon and a small churn

1468
Three *Spode* jugs small, medium and large, stamped *The Hunt* by J.F. Herring

1469
Box set of shot glasses with hunting scenes

1470
Model of a pair of horses pulling a Phaeton

1471
Two jugs by *Falcon Ware* depicting hunting scenes

1472
Concrete garden ornament of a horse lying down

1473
Large model of a painted wagon and Shire horse in full harness, measures 7ft long x 22ins wide x 23ins high (to top of wagon), and 38ins high (to horse's ears)

1474
Pair of *Royal Doulton*-style wall plates with hunting scenes, approx. 10ins dia; no chips/damage and no maker's mark

1475
Hackney mascot (*view in security pen*)

V1476
A very realistic full size model of a dapple-grey horse, along with a set of English leather breastcollar harness

1477
Model of a Shire horse



1478
A large *Capodimonte* porcelain model of a gypsy encampment detailing a bow top caravan, a grazing horse, two musicians, a couple dancing, an old woman tending the fire, and a small child playing with the dog, along with a monkey and a hen and her chicks. Measures 24ins x 16ins x 15ins, sculpted by artist Sandro Maggioni.

1479
Border Fine Arts model of a Market Dray from the James Herriot series, signed F. MacAllister, 708/950

1480

Border Fine Arts model of a Doctor's Gig from the James Herriot series, signed Ayres 1217/1250

1481

Border Fine Arts model of a Baker's Cart, signed Ayres 781/1500

1482

Border Fine Arts model of a Welsh Cob mare and foal by Anne Wall

1483

Border Fine Arts model of a Welsh Cob stallion entitled *Into their Stride*, 36/500 signed in pen by Ayres, August 2012

1484

Border Fine Arts model of a Welsh Cob stallion signed by Anne Wall, 921/1250

1485

Border Fine Arts model of a lady riding side saddle on a Dun horse with a hound by her side, on a wooden plinth signed by Anne Wall 427/950

1486

Border Fine Arts model entitled *All Set for Appleby Fair* from the Gordon Boswell series, signed by Ayres, 323/600

1487

Border Fine Arts model of a fruit and veg cart from the Gordon Boswell series, signed Ayres 87/400

1488

Border Fine Arts model of a Pot Cart from the Gordon Boswell series, signed Ayres, 354/600

1489

Border Fine Arts model entitled *Nearly There* from the Gordon Boswell series, signed Ayres, 151/400

1490

Border Fine Arts model entitled *Arriving at Appleby Fair* from the Gordon Boswell series, signed Ayres, 92/600

1491

Border Fine Arts model entitled *The Fortune Teller*, signed by Ayres 32/300

1492

Border Fine Arts model entitled *Waterloo Chase* of two greyhounds and a hare, 126/350

1493

Small *Matchbox* model of a gypsy wagon, a horse and buggy pencil sharpener and a coach and four lead models

1494

Model of a Brewery Dray with a team of Shires in a glass bottle

1495

China tea set for a Gypsy Wagon, a teapot and a biscuit barrel in the shape of a Gypsy Wagon

1496

Two large green vases from a Gypsy Wagon

1497

A fine model of a Ledge Wagon painted and decorated in red and yellow with hay rade, steps and shafts

1498

A detailed model of a *Fruiterers & Greengrocers* cart with horse and driver displayed in a glass case, dated 1894

1499

Early 20thC metal horse and carriage balance toy

1500

Early 20thC child's ride-on pedal horse in harness with driving reins, pulling a two-wheel pedal cart

1501

Collection of twelve mugs depicting horse racing legends

1502

A quantity of eight mugs and two saucers with carriage images

1503

Seven china plates entitled - *The Haywain* by John Constable; *The Harness Maker*; *The Horse Collar Maker*; *The Grocer*; *Charlotte Smiths Wagon*; *Fruit Pickers with Gypsy Wagon* and *The Hackney*

1504

Three enamel models - Gypsy Wagon, a donkey and a horse, along with a whitemetal mule money box and a horse's head pill box

1505

Harriet Glen 9ct gold Hackney horse tie pin (*view in security pen*)

1506

Six dozen horse hoof buttons (*view in security pen*)

1507

Presentation brass horseshoe with a whip running through, circa 1920 by *Stones of Romford*

1508

Beswick model of a rearing Welsh cob

1509

Beswick model of a large Shire horse

1510

Beswick model of a Shire horse

1511

Beswick models of foals

1512

Ornament of a huntsman and horse, plus a set of shot glasses with hunting scenes

1513

Border Fine Arts 'Ride-Away' Shetland pony with girl rider (collector's item)

1514

Two Shetland pony head 2-hook cast iron, size 20cms x 3cms x 15cms. Can be used indoors or outdoors, hand crafted with holes for fixing

1515

Shetland pony 3-hook horseshoe design, cast iron, size 26.5cms x 3.5cms x 14cms. Ideal for home or stable. Can be used indoors or outdoors, hand crafted with holes for fixing

EQUESTRIAN BOOKS

To follow Pictures & Models

1551

Principles and Practice of Horse Shoeing by Charles M. Holmes; a scarce textbook printed 1928

1552

The Gypsies - Waggon Time and After by Dennis E. Harvey

1553

The Draft Horse Primer - The Heavy Horse, Its Harness and Harness Decoration by Terry Keegan

1554

Fit to Compete; Ringcraft; Guide to Basic Dressage; Keeping Horses; Fundamentals of Riding; Preparing for a Dressage Test and Riding a Dressage Test (7)

1555

All Weather Surfaces for Horses; Horse Breeding & Stud Management; The Jeffery Method of Horse Handling; The Trouble with Horses; Bit by Bit and Understanding your Horse (6)

1556

The Horse Master's Notebook; Learning to Ride as an Adult vol.1 & 2; If Wishes were Horses; Centred Riding and Horse Treats Recipe Book (5)

1557

Showing Horses & Ponies; Training the Young Horse & Pony; Training your own Horse; Basic Training of the Young Horse; The First Two Years and Give your Horse a Chance (6)

1558

A Half a Century of Memories by Snaffles, published 1950 and a 1st edition of *Cross Country with Hounds* by F. A. Steward, published 1936 (2)

1559

The New Gypsy Caravan by Timothy Lemke

1560

Travelling Art: Gypsy Caravans and Canal Barges by John Baxter and Gordon Thorburn

1561

Gypsy Dream Dictionary; Spokes by Janna Eliot; *Diddakoi* by Rumer Godden and *Gypsy Caravan* (4)

1562

Step and Go Together by B. K. Beckwith

1563

A Romany Life by Gipsy Petulengro

1564

Breaking a Horse to Harness by Sallie Walrond

1565

The Art of Driving by J. A. Allen

1566

Book of the Hackney 1946-1957 by Charles Cornell

1567

The Old Straight Track by W. Atkins

1568

The Draft Horse Primer - The Heavy Horse; Its Harness and Harness Decoration by Terry Keegan

1569

The Coaching Days

1570

Tales of the Old Horsemen by Jennifer Davis

1571

Gypsies and Gentlemen by N. Wilson

1572

Great Jockeys of the Flat by M. Tanner and G. Cranham

1573

Treasures of the Bloodstock Breeders' View by L. Rasmussen and M. Napier

1574

There'll Always Be Appleby - Appleby Gypsy Horse Fair: History, Mythology, Evaluation by A. Connell

1575

Yorkshire Gypsy Fairs, Customs and Caravans by E. A. Jones

1576

The Stopping Places, A Journey Through Gypsy Britain by Damian Le Bas

1577

Saddlery and Harness Catalogue by Rawle of London

1578

Saddlery and Harness Catalogue by Mossman

1579

Vintage catalogue for stable and cow shed fittings, circa 1900 by Carron & Co.,



1580

Two hard back, cloth bound books one entitled *Pastime with Good Company* containing pencil illustrations by G. D. Armout, with an introduction by Horace G. Hutchinson, and the other entitled *Hunters' Moon and Other Hunting Verses*, a 1st edition by Capt. Edric G. Roberts containing eight coloured plates illustrated by Gilbert Holliday



1581

A horse-drawn vehicle catalogue of *Light Trade Vehicles* by Hawley Mills & Co., MIBCM of Frederick St. Walsall, England. Est - 1789, in a cloth bound cover, no frontispiece, some foxing and water marks. Approx. 96 colour plates of vehicles including two-wheel, four-wheel wagons and flat beds, hearses and hand carts (*view in security pen*)

1582

Quantity of assorted gypsy-related books

1583

C.A.A. *Book of Carriage Restoration*, 1983 and *Bristol Wagon & Carriage Catalogue*, 1900 (2)

1584

Encyclopaedia of Driving and *Looking at Carriages* both by Sallie Walrond (2)

1585

All Thanks to His Grace - A History of the Easton Harriers 1862-1986 and *If St. Peter Has Hounds* by Tony Harvey (2)

1586

English Gypsy Caravan by C.H. Ward-Jackson & Denis Harvey and *Wagon Time and After* by Denis Harvey (2)

1587

The Horses & Appleby Fair by Heidi M. Sands; *Romano Lavo-Lil* by George Borrow, 1909 and *Gypsy Horses and the Travelers Way: The Road to Appleby Fair* by John S. Hockensmith and *English Gypsy Caravan* by C.H. Ward-Jackson & Denis Harvey (4)



1588

A large and heavy hard back book by John Barker & Peter Ingram entitled *Romany Relics, The Wagon Album*, measures approx. 12ins x 10ins x 1ins. Containing 344 pages of colour/black and white photos, and drawings (*view in security pen*)

1589

Quantity of assorted gypsy-related books

1590

Roundabout Relics by John Barker

1591

The Horse Keeper's Handbook of Tips & Wrinkles Recipes & Secrets, 1921 and *Moseman's Illustrated Guide*, 1995; *Barnard Saddlery*, Rome & NY, and *The Rocking Horse - A History of Moving Toy Horses* by Patricia Mullins 1930's (4)

1592

Autobiography of the King of the Gypsies in the 18th Century, entitled *Life and Adventures of Mr Bampfylde-Moore Carew*, with an engraved portrait author, and includes a dictionary of the Cant language. Printed in London 1782 (*view in security pen*)

1593

Illustrated book titled *Veterinary Notes for Horse Owners* by Horace Hayes, 1891, together with *The Manual of Horsemanship*, 1937, published by the War Office and illustrated with photographic plates throughout (2)

1594

Bound as one book - *Riding & Driving* by Edward L. Anderson and *Driving* by Price Collier, published in New York 1905 and containing many photographic plates; in very good condition; and *The Badminton Library Book of Driving*, a cloth-bound reprint of the 1890 edition of *Driving by His Grace, the Duke of Beaufort*

1595

Coaching Days and Coaching Ways by W. Outram Tristram, 1901. A fine copy bound in half green morocco leather and illustrated with engravings throughout

1596

The Old Coaching Days in Yorkshire by Tom Bradley, 1889, 1st edition containing many engravings in its original cloth binding with gold decoration

1597

The Exeter Road - The Story of the West of England Highway by Charles Harpor, 1st edition 1899. Bound in its original cloth binding, containing many plates and illustrations within the text. The book looks at travel in the coaching era

1598

Box of assorted horse books (2 lots, 1598-1599)

1600

Box of interesting Western magazines and horse books

1601

Stagecoach by John Richards, chairman of the BDS, fully illustrated with colour prints, etc. and *Tally-Ho!* a hardback book by Christopher Busby with illustrations (2)

Anyone missing their lot/s, either bought or unsold, must speak to a member of staff on the day of the sale, prior to leaving the premises, so we can investigate the matter.

2020 CARRIAGE & EQUESTRIAN

SALES DATES

Reading Carriage & Heavy Horse Sales

Wednesdays – 4th March, 8th July & 11th November

OFF SITE SALES

5TH North of England Carriage Sale

Wednesday 19th August 2020

ANY ADDITIONAL SALES WILL BE ANNOUNCED IN DUE COURSE

OTHER SALES IN READING

Antique & General Sales

**Saturdays – 25th January, 29th February, 21st March, 25th April,
23rd May, 27th June, 25th July, 22nd August, 26th September, 31st October,
NO SALE IN NOVEMBER & 12th December.**

Contractors' Plant

Thursdays – 6th February, 2nd April, 4th June, 6th August, 8th October & 3rd December

Grounds Maintenance

Wednesday 11th March 2020

**Entry forms for the above sales are available from the office or online.
All catalogues will be online prior to the sale. If you would like to receive
notification of all our sales via email (e-shot), please register on our website –
www.tsauction.co.uk**

**For further information about our carriage sales, any other auctions, or the
service we provide, please contact us.**

Thimbleby & Shorland

Est. 1901

31 Great Knollys Street, Reading, Berkshire RG1 7HU
Tel: +44 (0) 118 950 8611 Fax: +44 (0) 118 950 5896
Email: info@tsauction.co.uk

Buyer's Number

Absentee/Telephone Bid Form

Bids will not be accepted without full details

Name: Address:

..... Post Code:

Tel No: Mobile No: Email:

CREDIT CARD DETAILS

Card No: Issue No: Security No:

Expiry Date: Valid From: Type of Card: Name on Card:

Lot No.	Description	£ Max limit Exc. Premium & VAT	Telephone Bid please ✓

Conditions

1. Please ensure that your written bids are submitted a minimum of 30 minutes before start of the sale and telephone bids are placed a minimum of 24hrs before the start of the sale.
2. Bidding will be executed as cheaply as is permitted by other bids or reserves if any, and with care and judgment by the Auctioneers.
3. I understand that if any of my bids are successful the total price payable will be the hammer price plus a Buyer's premium of 9% plus VAT at the current rate.
4. Lots marked with * are subject to VAT at the current rate on the hammer price, plus a Buyer's premiums of 9% plus VAT at the current rate
5. I request T&S, without legal obligation of any kind on its part, to bid on the above lots up to the prices listed.
6. Instruction to 'buy' with no upper limit will not be accepted.
7. Horse-drawn carriages not collected within 7 days will be subject to a storage charge of £5 a week plus VAT at the current rate.
8. I understand that items purchased, unseen, are still my responsibility regardless of condition reports provided by the Auctioneer.
9. Please sign below and return to Thimbleby & Shorland.

I agree to abide by the Auctioneers' Conditions of Sale as printed in the catalogue and I confirm that I have inspected/not inspected the above lots and am satisfied with their descriptions and appearance.

Signed: Date:

IMPORTANT NOTICE – MARKET OFFICE

In order to assist with the efficient running of the market office on busy sale days and to reduce the queuing time, please note the following system.

Purchasers will queue as before to request and settle invoices with the main cashier.

Vendors requiring advice notes or clients with any queries which **DO NOT** involve payment will enter from the 'Exit' door and talk to the member of staff on the end computer.

Your co-operation in this matter would be much appreciated.

POST-SALE AUCTION PRICE LISTS

These are available after the auction and are intended for clients who attended the sale who will be aware of any substituted lots that may have been forward.

Please contact the office for a Subscription Form

The price is £5.00 per sale or £20.00 for an annual subscription.

ACCOMMODATION IN READING - nearest to the furthest

Rooms get booked up quickly, make your reservations as soon as you can.

Travelodge Reading Central Hotel - nearest to the Market

60 Oxford Rd, RG1 7LT Tel: 0871 984 6211 or Central Reservation 0871 984 8484 / www.travelodge.co.uk

Penta Hotel – opposite above hotel

Oxford Rd, Reading, RG1 7RH Tel: 0118 958 6222 / www.pentahotels.com

easyHotel

132-138 Caversham Road, Reading RG1 8AY – Tel: 0118 304 3400 / www.easyhotel.com/reading/

Crowne Plaza Reading

Caversham Bridge, Richfield Avenue, Reading RG1 8BD – Tel: 0118 925 9988 / www.crowneplaza.com

Premier Inn – Reading Bridge - 15 mins walk to the Market

Richfield Av. RG1 8EQ Tel: 0871 527 8922 or

Premier Inn – Gateway M4, Jct 11 (New)

Central Reservations 0871 527 9222 / www.premierinn.com

Hotel IBIS Reading Central - 10 mins walk to the Market

25a Friar St. RG1 1DP Tel: 01189 533 500

Hotel Novotel Reading Central - 10 mins walk to the Market

Icon House, 25A Friar St. RG1 1DP Tel: 01189 522 600 / www.novotel.com

Hilton Hotel – exit Junction 11 off the M4, follow signs for Reading

Drake Way, RG2 0GQ Tel: 01189 169000 / www.hilton.co.uk

inharness

enjoy driving horses and ponies



SUBSCRIBE TODAY

Annual subscription **£28.50 for 6 issues**

Ask about saving a further 20% when subscribing by direct debit

68 PAGES

PACKED WITH

- Reports, Driver interviews
- Training Articles
- Behind the Scenes
- Working horses
- Reports • Driving News

www.inharness.co.uk

01380 734374



The
CARRIAGE
COMMENTATOR



Discover an exciting new forum for the driving world

Visit the website to enter the world of The Carriage Commentator, an online forum brought to you by the experts. For an introductory subscription of £5 per month, you can access articles, news, views and advice on all areas of carriage driving.



www.carriagecommentator.com

PayPal

CONDITIONS OF SALE

1. The highest bidder for each lot shall be the Purchaser and, in the event of any dispute, the Auctioneers shall have absolute discretion either to settle such dispute or to re-offer the lot immediately.
2. No person may advance less at a bid than a sum to be named from time to time by the Auctioneer, nor shall any bidding be retracted. The Auctioneer may, without giving any reason therefor, refuse to accept the bidding of any person or persons.
3. All lots are put up for sale subject to any reserve price placed by the Vendors, who may bid for any lot or lots, and may withdraw any lot or lots, either personally or through the Auctioneer or through any other person, as many times as they respectively may think fit.
4. Each Purchaser shall give his or her name and address in writing (if required) to the Auctioneer at the Sale and pay the full purchase money at the close of the Sale or, if required, the whole or a portion of the purchase money, as the Auctioneer may determine, during the course of the Sale. If any Purchaser fails to comply with any of these conditions the lot or lots in respect of which such failure is made may, if the Auctioneer thinks fit, be put up again and resold. If upon such resale a lower price is obtained for any such lot or lots than was obtained on the first sale the difference in price shall be a debt due from the Purchaser in default upon the first sale.
5. No lot or lots shall be removed from the premises until paid for, but each and every lot shall immediately at the fall of the hammer be considered as delivered and be and remain in every respect at the absolute risk of the respective Purchaser or Purchasers thereof, and shall be removed at the Purchaser's expense after the conclusion of the Sale and taken with all faults or errors of description.
6. The Auctioneers act only as agents for the Vendor(s) and are not responsible for any default by either Vendor(s) or Purchaser. In particular, they shall not be liable to pay the Vendor until payment is received from the Purchaser.
7. No undertaking of the Auctioneers or their employees to take charge of any lots after the sale or to forward them to their destination shall be held to impose upon the Auctioneers any legal obligation or vitiate any of the foregoing conditions.
8. Purchasers paying by cheque must be prepared, if required, to produce a banker's reference. The Auctioneers reserve the right in their sole discretion to refuse payment by cheque.
9. In all cases of transfer the original Purchaser shall be held responsible for the purchase money.
10. The Auctioneer reserves the right to withdraw or divide any lot or to combine any two or more lots at his sole discretion and to sell in such order as he may think fit.
11. The Auctioneers have described the lots to the best of their ability and belief from information furnished by the Vendors who shall be alone responsible for any error or mis-statement, which there may be. The Auctioneers undertake no liability whatever in respect of any faults, deficiencies and errors of any description, oral or printed, nor do they accept responsibility for the authenticity, genuineness, origin, age, condition or quality of any lot and all statements as to these matters whether contained in the catalogue or made orally are statements of opinion only and are not to be taken as being or implying a statement or representation of fact. Any intending Purchaser must satisfy himself by inspection or otherwise as to the correctness of each such statement. The Vendor does not make or give and neither the Auctioneers, nor any person in their employ, have any authority to make or give any representation or warranty in relation to any of the lots without the express instructions of the Vendor(s).
12. The Auctioneers accept no responsibility in connection with the commissioning of their staff to bid for any lots. Reserves and commissions given verbally or by telephone are accepted at the sender's risk and must be confirmed in writing before the Sale.
13. **THIRD PARTY LIABILITY.** All persons on the Auctioneers' premises before, during or after the Sale shall be deemed to be there at their own risk and with notice of the condition of the premises and of the method of arranging lots and shall have no claim against the Auctioneers in respect of any injury or accident which may occur from any cause whatsoever.
14. If any Purchaser shall fail to comply with the above conditions or any of them, the Auctioneers shall be at liberty to recover in full the amount of the purchase money of the lot or lots bought by such Purchaser together with all interest, costs, charges and expenses, without reference to any delivery or acceptance of the lot or lots, other than the first delivery by the fall of the hammer, or to resell any lot or lots bought by such Purchasers, either by public or private sale, and the full amount of the purchase money at the present sale, or the deficiency (if any) arising from the second sale, together with all interest, costs, charges and expenses, shall be made good by the defaulter and be recoverable as and for liquidated damages.

Auctioneers: THIMBLEBY & SHORLAND, READING

NOTE: Purchasers or their agents are requested to obtain accounts and delivery orders at the Auctioneers' Office before leaving the place of sale and carefully to examine same. The Auctioneers cannot be held responsible for any errors in accounts or delivery orders unless they are notified of such errors on the day of sale and before the lots are removed from the premises.



Thimbleby & Shorland

31 Great Knollys Street, Reading, Berkshire RG1 7HU
Tel: +44 (0) 118 950 8611 Fax: +44 (0) 118 950 5896
www.tsauktion.co.uk info@tsauktion.co.uk